

Division I
Academic
Performance
Program/
Overview

Eric Brey
Katy Yurk

Learning Objectives

- Overview of the NCAA Division I Academic Performance Program (APP).
- Explain basic APP policies and procedures.
- Apply directives to basic fact scenarios.
- Analyze APP data.

Overview of
APP and
Basic Policies
and
Procedures

Academic Reform

- Student-athlete accountability through increased academic-eligibility standards (2003).
- Enhanced academic rates of measure, real-time rate and better graduation rate (2004).
- Accountability through APP benchmark for postseason competition and penalties (2006; revised 2011).

APP

- Ensure the Division I membership is dedicated to providing student-athletes:
 - Exemplary educational and intercollegiate athletics experiences in an environment that recognizes and supports the academic mission of member institutions while enhancing ability to earn a four-year degree.
- Serve as an academic point of access to postseason competition.

Bylaws 14.01.4 and 14.8

Committee on Academics

Duties:

- Administrative body and oversight of academics including APP.
 - Oversee data collection process.
 - Identify APP "cut" lines.
 - Provide interpretations of APP legislation and policies.

Bylaw 14.8

Committee on Academics

Duties (continued):

- Communicate annual APP rates [Academic Progress Rate (APR) and Graduation Success Rate (GSR)].
- Identify teams that demonstrate academic excellence.
- Serve as the appellate body for APP policies and penalties.

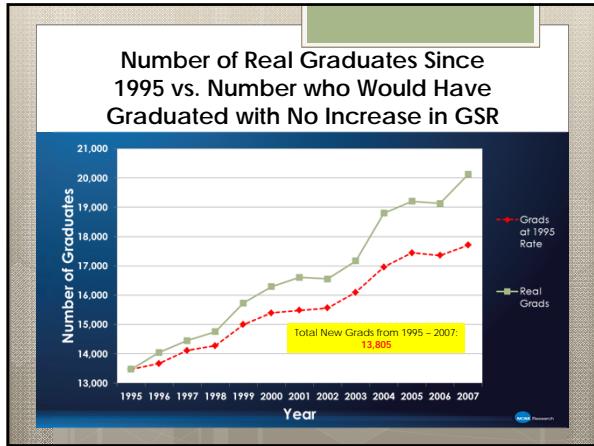
Bylaw 14.8

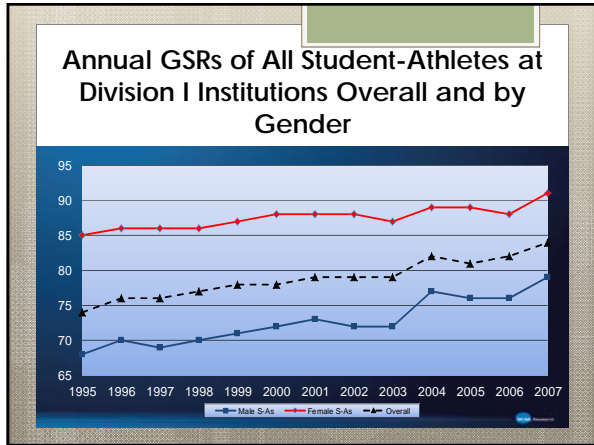
APP Data Collection

- GSR.
- Academic Performance Census (APC).
- NCAA Division I Academic Progress Rate (APR).

GSR

- More specific than Federal Graduation Rate.
 - Includes transfers into an institution and midyear enrollees.
 - Removes student-athletes who withdraw and would have been academically eligible to compete the next term had they returned.
- Calculated for every sport.





- ### APC
- Annual compilation of academic performance variables (e.g., credit hours, grade-point average).
 - Academic data used for NCAA research purposes.
 - Data informs academic policies.
 - Submitted online using the APP Data Collection Program.
 - Collected in fall term with APR data.

APR

- Real-time rate, calculated term-by-term.
- Includes all student-athletes on a team in a given year (as opposed to entering class).
 - Includes student-athletes receiving athletically related financial aid; or
 - For nonscholarship programs/teams, a subset of recruited student-athletes.

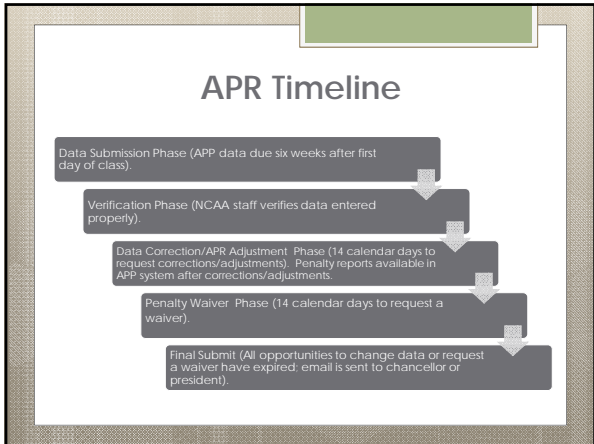
cont...

APR

- Points awarded for eligibility/graduation and retention.
- Totaled over most recent four years (cohort).
- Used in analysis for eligibility for postseason competition, APP penalties and public recognition of top academically performing teams.

Due Dates

- GSR:
 - June 1.
- APR and APC:
 - Six weeks (**42 calendar days**) following the member institution's first day of classes for the fall term.
 - Failure to submit results in an institution being declared ineligible for postseason competition, including NCAA championships and bowl games.



APR Calculation

- Two available points each academic term.
 - Eligibility "E" point = student-athlete meets academic eligibility standards **as of the end of the academic term.**
 - Retention "R" point = student-athlete is enrolled full-time as of the census date or the fifth week of classes **of the next term.**

$$\frac{\text{Number of points earned}}{\text{Number of points possible}} \times 1,000 = \text{APR}$$

Delayed-Graduation Points

- Point awarded in the term the former student-athlete graduates (1/0).
- Restores lost APR "E" or "R" point from last term student-athlete was in the cohort.
- Delayed-graduation points awarded for any academic year cohort that comprise the multiyear APR cohort.

cont...

Delayed-Graduation Points

Criteria/Directive:

- Student-athlete graduates from your institution in any year making up the four-year APR cohort.
- Student-athlete was not included in the team's APR cohort in the term in which he or she graduated from your institution.
- Student-athlete lost the "E" or "R" point in his or her last term in the APR cohort; or would have lost a point if the student-athlete departed prior to the implementation of the APR in 2003-04.

Example APR

Multiyear Rate:

	2010-11	2011-12	2012-13	2013-14	Multi-Year APR
Team's single-year APR	909	979	1000	861	943
Number of delayed graduation points	0	1	0	0	1
Eligibility rate	20/22 (909)	23/24 (958)	24/24 (1000)	15/18 (833)	82/88 (932)
Retention rate	20/22 (909)	23/24 (958)	24/24 (1000)	16/18 (889)	83/88 (943)

APR Adjustments

- Discount lost APR point(s) for a term or terms from the denominator.
- May request adjustment to lost "E" point, lost "R" point or both.
- Requests are based on mitigation affecting individual student-athletes.

APR Automatic Adjustments

- Transfer to another four-year institution.
 - 2.600 grade-point average.
- Professional athletics departure.
 - Earned eligibility point during last term.
- Medical-absence waiver.
- Missed-term exception.

Documentation is maintained on campus.

Adjustment Review Process

Guiding Principles/**Directive**:

- Circumstances surrounding individual student-athlete.
- Circumstances beyond the control of the student-athlete and/or team/institution.
- Contemporaneous documentation to support mitigation?

Decisions/Appeals:

- Initial decision by staff.
- Appeals to the NCAA Division I Committee on Academics Subcommittee on Data Collection and Reporting.

Example Adjustment Calculation

	Team Members	Fall 2014 Earned E?/Eamed R?	Spring 2015 Eamed E?/Earned R?	Point Totals
1	Jack N.	E - Yes / R - Yes	E - Yes / R - Yes	4/4
2	Tiger W.	E - Yes / R - Yes	E - Yes/ R - Yes	4/4
3	Walter H.	E - Yes / R - Yes	E - Yes / R - No	3/4
4	Ben H.	E - Yes / R - Yes	E - No / R - No	2/4
5	Gary P.	E - Yes / R - Yes	E - Yes / R - Yes	4/4
6	Tom W.	E - Yes / R - Yes	E - Yes / R - Yes	4/4
7	Bobby J.	E - Yes / R - Yes	E - No / R - Yes	3/4
8	Arnold P.	E - Yes / R - Yes	E - Yes / R - Yes	4/4
9	Gene S.	E - Yes / R - Yes	E - No / R - Yes	3/4
	TOTALS	18/18	13/18	31/36 (861)

Example Adjustment Calculation

Team Members	Fall 2014 Earned E?/Earned R?	Spring 2015 Earned E?/Earned R?	Point Totals
Walter H.	E- Yes/R-Yes	E-Yes/R-No	3/4

Adjustment request for lost R point:

- Was the mitigation outside the control of the student-athlete and/or team/institution?
- Is there contemporaneous documentation to support the mitigation?

cont...

Example Adjustment Calculation

Adjusted APR calculation:

Team Members	Fall 2014 Earned E?/Earned R?	Spring 2015 Earned E?/Earned R?	Point Totals
Walter H.	E- Yes/R-Yes	E-Yes/R-Adjusted	3/3

$$\text{Single Year APR} = \frac{31}{35} = .886 \times 1000 = 886$$

Access to
Postseason
Competition
and
APP Penalties

What's New

- Transition Period has ended: 930 APR penalty benchmark.
- Limited Resource filters no longer available for APP penalties or loss of postseason.
- Track Cohort: combined as one team rather than separate indoor and outdoor teams.

Access to Postseason

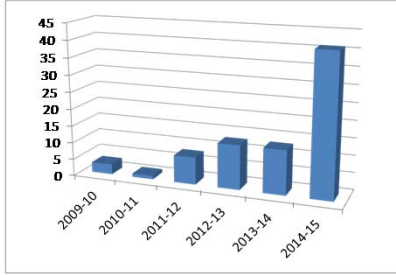
The NCAA Division I Board of Directors established a **930** multiyear APR benchmark for access to **2015-16** postseason competition:

- Postseason includes all events conducted after last regular season contest or end of conference tournament (e.g., bowl games, NIT, WNIT, etc.).
- Conferences determine ability to compete in conference tournaments.
- Applies to individual competitors on teams not meeting standards.
- Waiver process available.

Postseason Benchmarks

- To access postseason competition in 2015-16 and beyond:
 - Need a multiyear APR of at least 930 OR, after subject to first postseason restriction, have a two-year average APR of 950 or higher in the two most recent years.
 - Mission filter available based on resources (e.g., bottom 15 percent as defined by Committee on Academics) one time only.

Teams That Have Lost Access to Postseason Competition by Year



APP Penalties

- Institutions must have a multiyear APR of 930 to avoid penalties.
- APP penalties are separate from eligibility for postseason competition.

APP Penalties Benchmarks

- Four-year APR of 930 or higher to avoid APP penalties.
- Team subject to level two- or three- penalty can use improvement filter. Improvement defined as two-year average APR of 950 in the two most recent years.

Level One Penalties

- Reduce four hours and one day of countable athletically related activity (CARA) per week in-season.
 - Results in 16 hours per week rather than 20 hours; and
 - Five days per week rather than six days.
- Time replaced by academic activities.

Level Two Penalties

Level Two Penalties Include:

- Level-One penalties (in-season); and
- Reduce four hours of CARA per week out-of-season.
 - Results in four hours per week rather than eight hours; and
 - Time replaced by academic activities.
- Cancel nonchampionship season/spring football.
- For sports without nonchampionship season, 10 percent reduction in contests and length of season.

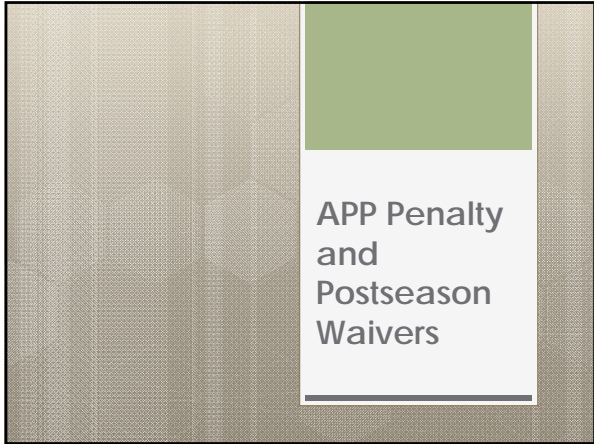
Level Three Penalties

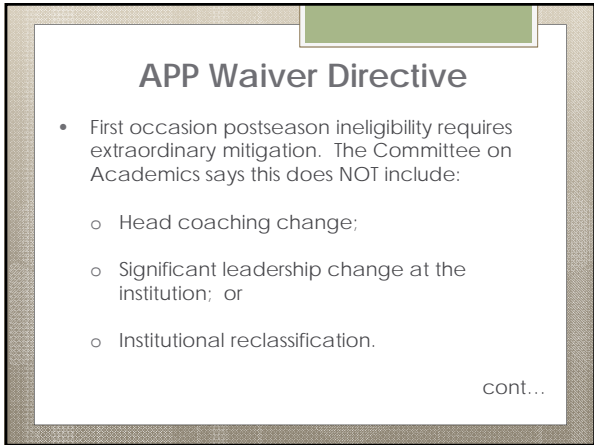
Level Three Penalties Include:

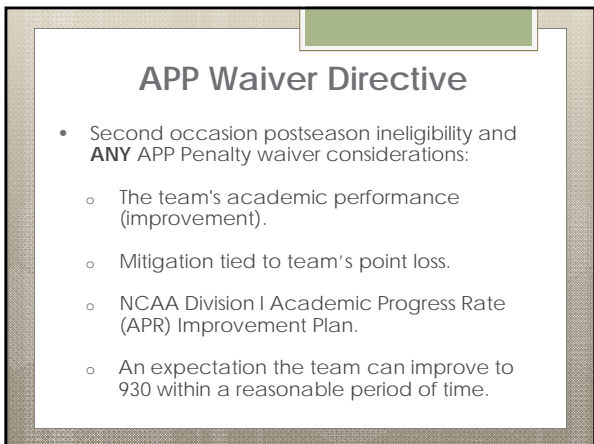
- Level-One and Level-Two penalties; and

Menu Options May Include:

- Financial aid penalties (any amount, any type).
- Practice penalties (reduction of four hours/week and up).
- Contest reductions (10 percent up to full season).
- Restricted and corresponding membership.
- Coach-specific penalties, including game restrictions, recruiting restrictions.
- Restricted access to practice for incoming student-athletes that fall below predetermined academic standards.
- Multiyear postseason competition ban.







APP Waivers/Appeals Process

Level-One APP Penalty and Postseason Competition:

- Staff makes decision.
- Institution may appeal to the Subcommittee on Penalties and Appeals.
 - If APP penalties, subcommittee reviews using documentation.
 - If postseason, institution presents appeal.

cont...

APP Waivers/Appeals Process

Level-Two APP Penalty and Postseason Competition:

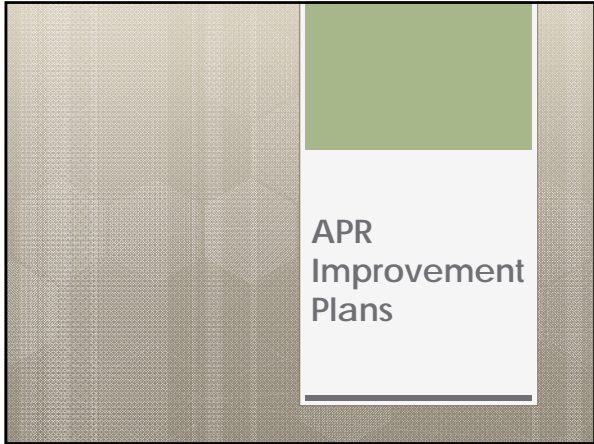
- Staff makes decision.
- Institution may appeal to Subcommittee on Penalties and Appeals.
- Institution presents appeal.

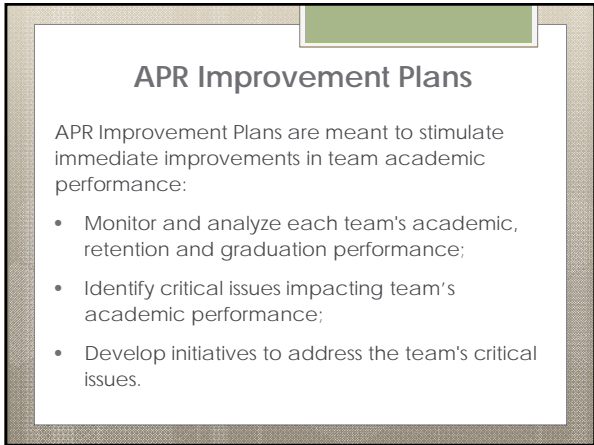
cont...

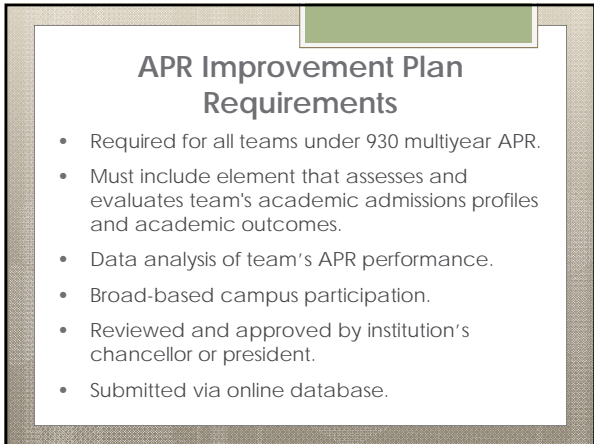
APP Waivers/Appeals Process

Level-Three APP Penalty and Postseason Competition:

- All institutions must submit a waiver setting forth recommended penalties or request for relief.
- Staff makes initial recommendation (approval or partial approval, with or without conditions).
- If staff recommendation unacceptable, waiver forwarded to Committee on Academics for in-person hearing.







APP Resources

- Data – Anne Rohlman
arohlman@ncaa.org
- Level One and Two penalties and loss of access to postseason competition and APR Improvement Plans - Katy Yurk
kyurk@ncaa.org
- Level Three penalties and loss of access to postseason competition – Andy Louthain
alouthain@ncaa.org

**APP Table Hours
Data/Waivers/Plans**

Indianapolis Site:

Tuesday: 10:30 a.m. to 1 p.m. in Rooms 302 and 303 (3rd floor)
4:45 to 5:45 p.m. in Rooms 302 and 303 (3rd floor)

Wednesday: 11:30 a.m. to 1 p.m. in Rooms 305 and 306 (3rd floor)
4:45 to 6:45 p.m. in Rooms 305 and 306 (3rd floor)

**APP Table Hours
Data/Waivers/Plans**

Denver Site:

Tuesday: 10:30 a.m. to 1 p.m. in Capitol 3 Room
4:45 to 5:45 p.m. in Capitol 3 Room

Wednesday: 11:30 a.m. to 1 p.m. in Capitol 3 Room
4:45 to 6:45 p.m. in Capitol 3 Room

